



MAIL TO: P.O. BOX 16347 • Louisville, KY 40256-0347
SHIP TO: 3649 Cane Run Road • Louisville, KY 40211-1961
Tel: (502) 778-2731 • 1 (800) 928-PUMP

Visit our website:
zoellerengineered.com

Product information presented here reflects conditions at time of publication. Consult factory regarding discrepancies or inconsistencies.



X70 HAZARDOUS LOCATION SERIES

CLASS I, DIVISION 1, GROUPS C & D
CLASS I, ZONE 1, GROUPS IIA & IIB
2 HP GRINDER PUMPS TECHNICAL DATA



| | | |
|-----------------------------|--|--------------------------------|
| MODELS: | <input type="checkbox"/> X7011 | <input type="checkbox"/> X7013 |
| CONFIGURATION: | REVERSING | HIGH FLOW |
| PUMP NAME PLATE HORSEPOWER: | 2.0 | 2.0 |
| SERVICE FACTOR: | 1.2 | 1.2 |
| NEC LOCKED ROTOR CODE: | K | K |
| MAXIMUM KW INPUT: | 3.9 | 3.9 |
| STANDARD IMPELLER DIAMETER: | 5.515" (140.0 mm) | 6.188" (157.2 mm) |
| DISCHARGE SIZE: | <input type="checkbox"/> 1.25" VERTICAL OR <input type="checkbox"/> 1.25" HORIZONTAL | |

| | | | |
|-----------------------|-------------------------------------|--|---|
| IMPELLER TYPE: | DUCTILE IRON VORTEX | TANDEM SEALS: | STANDARD |
| CUTTER & PLATE: | 440C SS HARDENED TO ROCKWELL C55-60 | MOTOR DESIGN LETTER: | NEMA B (3 Ph) NEMA L (1Ph) |
| PUMP NET WEIGHT: lbs. | 139 lbs. (63.0 kg) | POWER CORD LENGTH: ft(m) (20' STANDARD) (6.1 m) | <input type="checkbox"/> 25' (7.6 m) <input type="checkbox"/> 50'*** (15.2 m) |
| O-RINGS: | VITON | POWER CORD: | 14 GAUGE SOW |
| MOTOR SHAFT: | 416 SS | STATOR & LEAD WIRES INSULATION: | CLASS F |
| RPM: | 3450 | MAXIMUM STATOR TEMPERATURE: | 311 °F (155 °C) |
| MOTOR TYPE: | SUBMERSIBLE EXPLOSION PROOF* | | |

| | | |
|----------------------------|-----------------------------------|--|
| SHAFT SEAL CONSTRUCTION: | STANDARD | CARBON/CERAMIC UPPER SILICON CARBIDE/CARBON LOWER |
| | OPTIONAL UPPER | <input type="checkbox"/> SILICON CARBIDE/SILICON CARBIDE |
| | OPTIONAL LOWER | <input type="checkbox"/> SILICON CARBIDE/SILICON CARBIDE |
| STANDARD SENSING DEVICES** | MOTOR THERMAL SHUTOFF | THERMAL SENSORS |
| | MOISTURE DETECTION | MOISTURE SENSING PROBES |
| IMPELLER TRIM : | <input type="checkbox"/> OPTIONAL | DESIGN POINT: ___ GPM @ ___' TDH, IMPELLER DIA. ___" |
| MAXIMUM WATER TEMPERATURE: | | 104 °F (40 °C) |

* Level sensors must be intrinsically safe to maintain rating.

***Not available for 200 volt 1 phase (l) models.

** Requires a circuit in control panel to function.

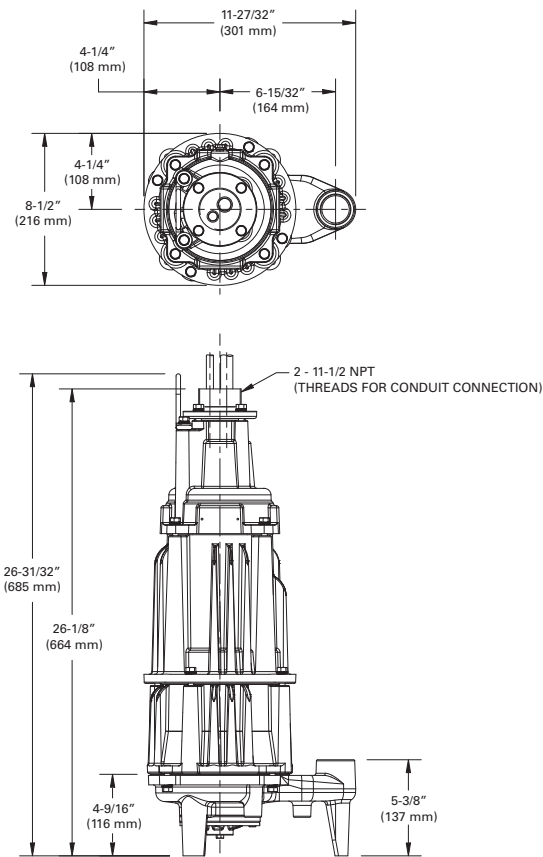
| MODEL | HP | SERVICE FACTOR | <input type="checkbox"/> 200V / 1 PH | | <input type="checkbox"/> 230V / 1 PH | | <input type="checkbox"/> 200V / 3 PH | | <input type="checkbox"/> 230V / 3 PH | | <input type="checkbox"/> 460V / 3 PH | |
|-------|-----|----------------|--------------------------------------|------|--------------------------------------|------|--------------------------------------|------|--------------------------------------|------|--------------------------------------|------|
| | | | FLA | LRA | FLA | LRA | FLA | LRA | FLA | LRA | FLA | LRA |
| X7011 | 2.0 | 1.2 | 20.0 | 60.7 | 17.2 | 57.3 | 12.3 | 47.0 | 10.8 | 41.9 | 5.5 | 20.6 |
| X7013 | 2.0 | 1.2 | 20.0 | 60.7 | 17.2 | 57.3 | 12.3 | 47.0 | 10.8 | 41.9 | 5.5 | 20.6 |

FEATURES

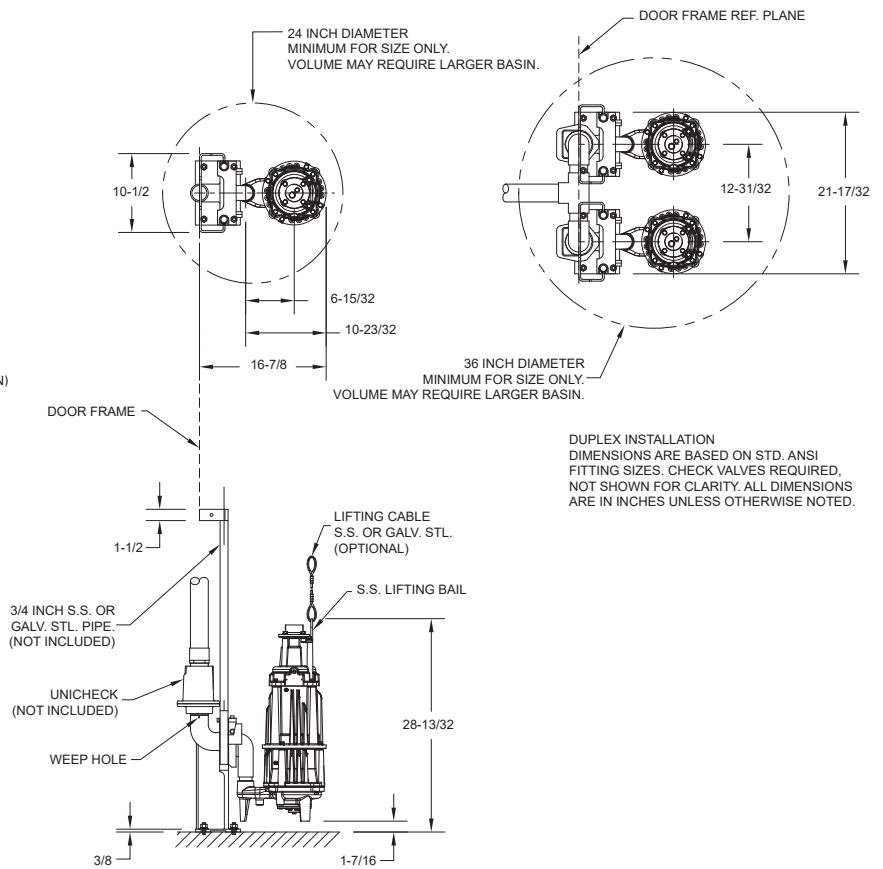
- Durable epoxy coated cast iron construction
- Bearings - upper and lower ball bearing
- Stainless steel motor shaft
- Motor - 2 HP, 60 Hz, 3450 RPM, 1 & 3 Ph, oil-filled, hermetically sealed, thermal sensor protected
- Dual mechanical shaft seals - upper carbon/ceramic, Lower silicon carbide/carbon
- Viton O-ring seals and cover gasket
- Impeller - non-clogging ductile iron vortex impeller
- X7011 Reversing model
- X7013 Single direction model
- 20 for UL Listed 3-wire SOOW cord. Longer cords available in 25' & 50'
- Hardened 440C stainless steel cutter and disc, Rockwell C55-60
- 304 SS hardware
- 1.25" NPT discharge
- 100% computerized tested

| Standard all models - 20 ft. cord - 2 HP | | | | |
|--|-----------------|----|------|--------|
| X7011 Models | Control Section | | | Listed |
| | Volts | Ph | Amps | cCSAus |
| EX7011 | 230 | 1 | 17.2 | Yes |
| IX7011 | 200 | 1 | 20.0 | Yes |
| FX7011 | 230 | 3 | 10.8 | Yes |
| JX7011 | 200 | 3 | 12.3 | Yes |
| GX7011 | 460 | 3 | 5.5 | Yes |

| Standard all models - 20 ft. cord - 2 HP | | | | |
|--|-----------------|----|------|--------|
| X7013 Models | Control Section | | | Listed |
| | Volts | Ph | Amps | cCSAus |
| EX7013 | 230 | 1 | 17.2 | Yes |
| IX7013 | 200 | 1 | 20.0 | Yes |
| FX7013 | 230 | 3 | 10.8 | Yes |
| JX7013 | 200 | 3 | 12.3 | Yes |
| GX7013 | 460 | 3 | 5.5 | Yes |



SK2837



SK2842



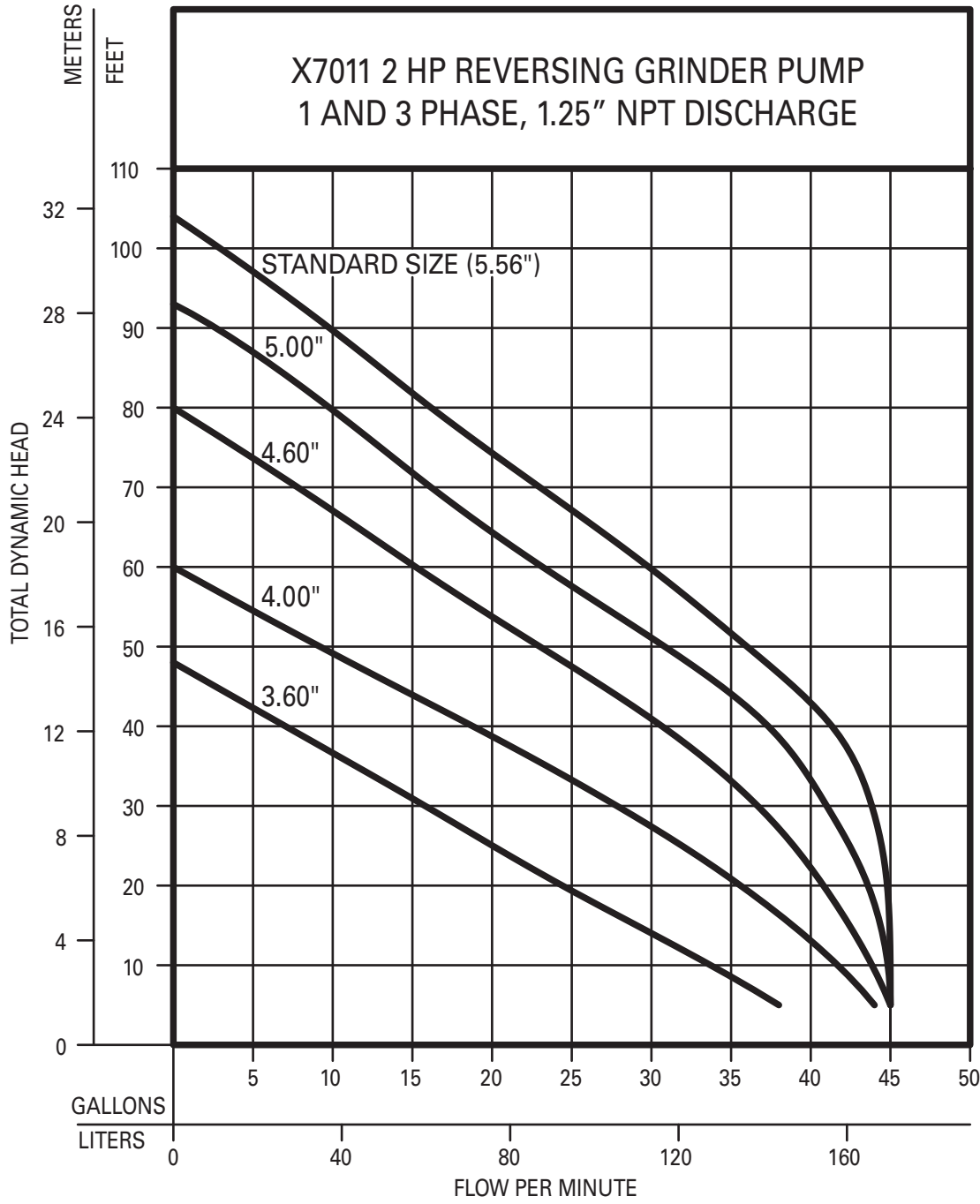
Patent No.
6,364,620

X7011 REVERSING

CLASS I, DIVISION 1, GROUPS C & D
CLASS I, ZONE 1, GROUPS IIA & IIB
PERFORMANCE DATA
2HD Grinder Pump



CSA US
Certified to CSA Standard
C22.2 No. 145
Tested to FM Standard
3600 & 3615



ZEPB0572

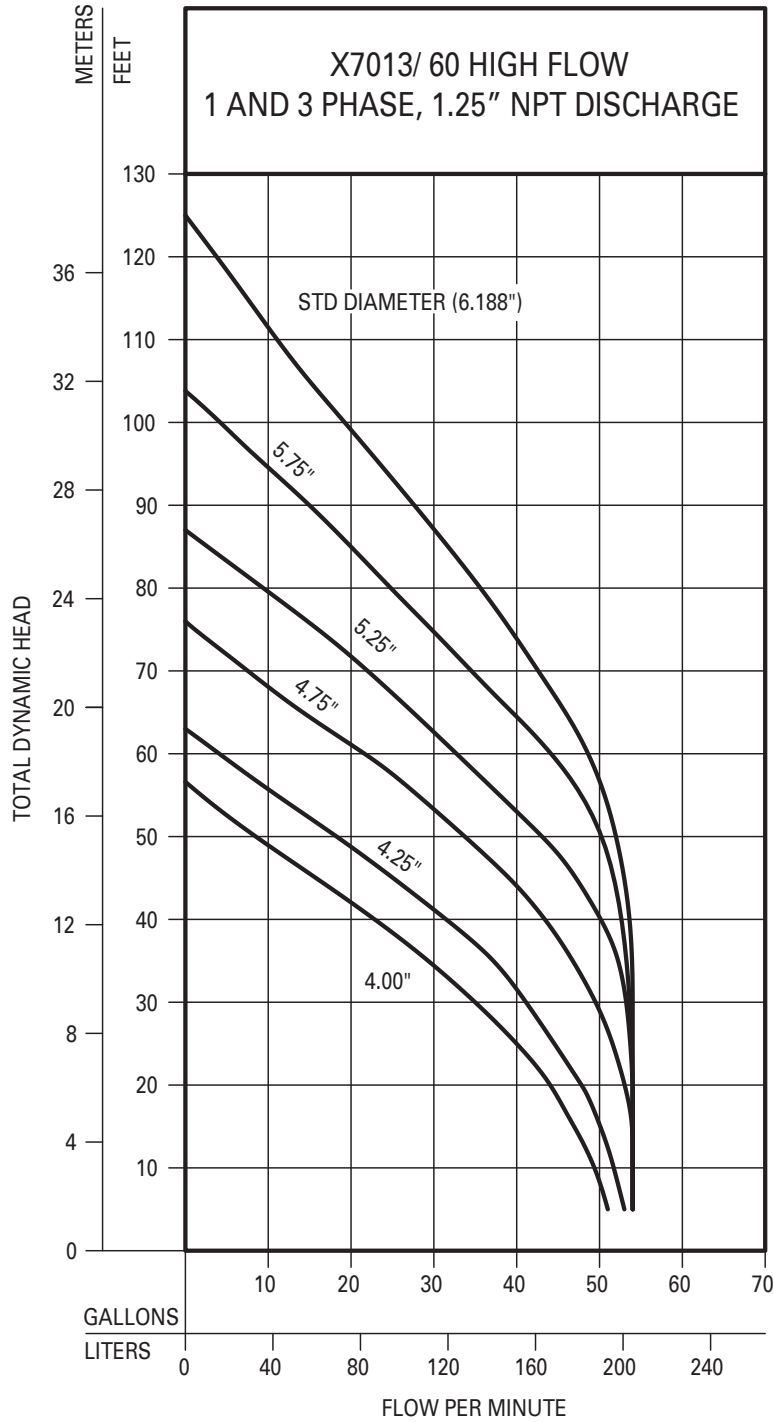


X7013 SINGLE DIRECTION
 CLASS I, DIVISION 1, GROUPS C & D
 CLASS I, ZONE 1, GROUPS IIA & IIB
PERFORMANCE DATA
2HP Grinder Pump



Certified to CSA Standard
 C22.2 No. 145

Tested to FM Standard
 3600 & 3615



155279