

MAIL TO: P.O. BOX 16347 • Louisville, KY 40256-0347  
SHIP TO: 3649 Cane Run Road • Louisville, KY 40211-1961  
Tel: (502) 778-2731 • 1 (800) 928-PUMP

Visit our website:  
zoellerengineered.com

Product information presented here reflects conditions at time of publication. Consult factory regarding discrepancies or inconsistencies.

## REPLACEMENT PARTS LIST FOR GRINDER MODELS:

E7021 NONAUTOMATIC 230V 1PH 60 HZ

I7021 NONAUTOMATIC 200V 1PH 60 HZ

RWD7021 AUTOMATIC/MANUAL RUN W/ WIRED FLOAT SWITCH 230V 1PH 60 HZ

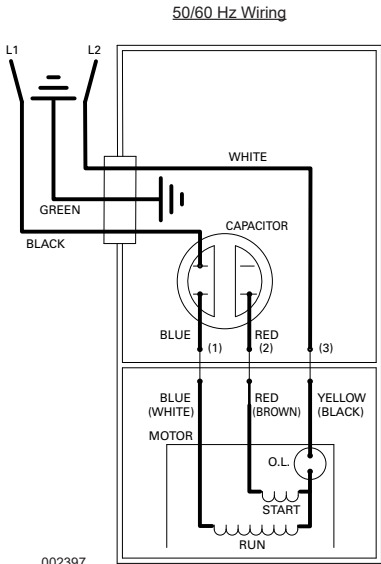
RWH7021 AUTOMATIC / MANUAL RUN W/WIRED FLOAT SWITCH 200V 1PH 60 HZ

Obsolete Models	Auto/Non	Volts	PH	Obsolete Date
RE7021	Nonautomatic	230	1PH	10/2024
RI7021	Nonautomatic	200	1PH	10/2024

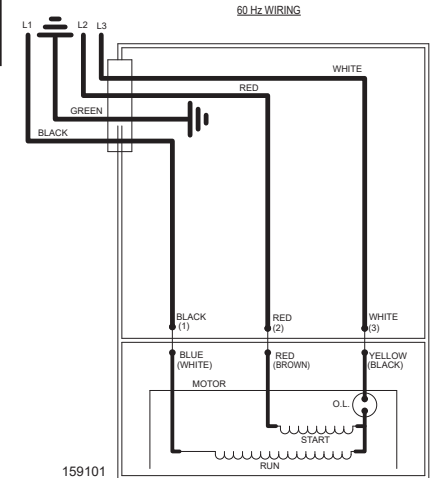
Consult factory for all other models

### TO ORDER REPLACEMENT PARTS PLEASE FURNISH THE FOLLOWING INFORMATION:

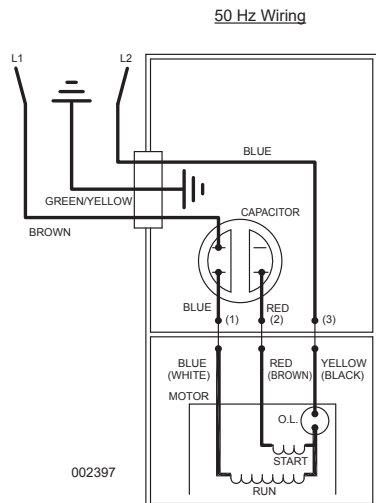
- Model number
- Part number of pump
- Part number and description of part



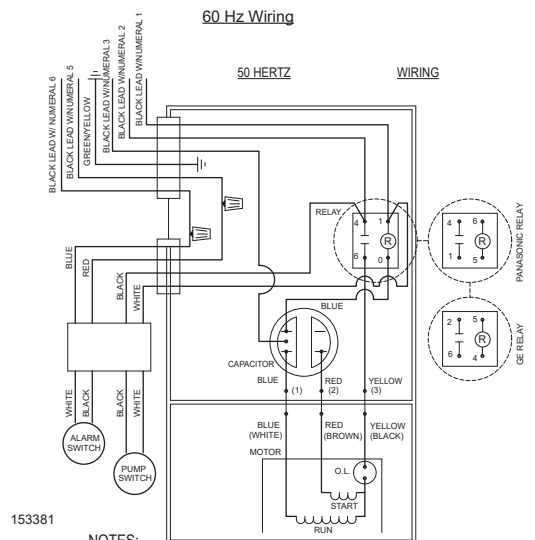
002397  
WIRING DIAGRAM FOR MODELS  
"E7021", "I7021" & "Z7021" All Revisions  
03/11 thru Current



159101  
WIRING DIAGRAM FOR MODELS  
"E7021 w/REMOTE CAPACITOR" All Revisions  
10/24 thru Current



002397  
WIRING DIAGRAM FOR MODELS  
"RWD7021" & "Z7021" All Revisions  
03/14 thru Current



NOTES:

- 1) INSULATORS REQUIRED ON GE RELAY TERMINALS 2 & 5.  
OMRON RELAY TERMINALS 1 & 4.

153381  
WIRING DIAGRAM FOR MODEL  
"RWD7021" & "RWH7021"  
All revisions thru Current

**REPLACEMENT PARTS LIST FOR MODEL "E7021", "I7021"**

See page 7 for illustration.

REF NO.	DESCRIPTION	QTY	NOTES	MODELS:			
				E7021-A	E7021-B	E7021-C	I7021-A
				3/11 thru 5/16	6/16 thru 09/24	10/24 thru Current	4/20 thru Current
1	• HANDLE	1		217069	217069	217069	217069
2	COVER & CORD (CORD - 20' (6 M) LENGTH SOW 15A PLUG)	1	2	151485	151485	N/A	N/A
	COVER & CORD (CORD - 20' (6 M) LENGTH SOW NO PLUG)			N/A	N/A	153104	153104
	OVER & CORD REMOTE CAPACITOR (CORD-20', 4 CONDUCTOR NO PLUG)	1		N/A	N/A	159107	N/A
3	CORD, TERM & SEAL ASM (CORD - 20' (6 M) LENGTH SOW 15A PLUG)			151487	151487	N/A	N/A
	CORD, TERM & SEAL ASM (CORD - 20' (6 M) LENGTH SOW NO PLUG)			N/A	N/A	153105	153105
	CORD,TERM & SEAL (CORD-20' (6M) LENGTH 14-4 SOW NO PLUG)	1		N/A	N/A	159106	N/A
4	• SEAL, CORD-ASM & STRAIN RELIEF	1	2	094043	094043	094043	094043
	SEAL, CORD-ASM & STRAIN RELIEF 14-4 SOW CORD	1	2	N/A	N/A	015634	N/A
5	COVER-MACH. (CORD, SOW)	1		001077	001077	001077	001077
	COVER-MACH. (CORD, H07RN-F3G1.5/CE)			N/A	N/A	N/A	N/A
	COVER-MACH. (CORD, 14 GA SOW)	1		N/A	N/A	014150	N/A
6	• GASKET, CASE/COVER	1	7	012649	012649	012649	012649
7	• WIRE PKG.	1	7	011092	011092	011092	011092
8	CAPACITOR & CLAMP ASM	1	7	151706	151706	151706	151706
9	• PLUG, TEST	2	6,7	015023	015023	015023	015023
10	• SEAL, THRU WALL TERM	3	7	003402	003402	003402	003402
11	HOUSING, MOTOR & STATOR	1	1	018909	018909	150961	150961
12	• SPRING, BEARING PRELOAD	1		017192	017192	017192	017192
13	• BEARING, UPPER 6201	1		006703	006703	006703	006703
14	ROTOR & BEARING ASM	1		018911	018911	158825	018911
15	• KEY	1		017893	017893	017893	017893
16	• BEARING, LOWER	1		012544	012544	007765	012544
17	• SEAL, MOTOR HOUSING	1		012648	012648	012648	012648
18	• OIL, DIELECTRIC-(57 OZ CAN)	1	6	009051	009051	009051	009051
19	ADAPTER-MACH.	1		017891	017891	158826	017891
20	• SEAL, SHAFT	1	6	155723	155723	151365	155723
21	• WASHER, SEAL LOCATING & SNAP RING	1	6	018913	018913	007769	018913
22	ROTOR, PUMP-HYDRAULIC & PIN	1	6	018915	018915	158827	018915
23	• PIN	1		018892	018892	N/A	018892
24	• SEAL, PUMP HOUSING	1	6	151078	151078	151078	151078
25	HOUSING, PUMP-MACH. & PRESS. RLF VALVE	1		019551	019551	019551	019551
26	LEG, WIREFORM	1		151920	151920	157359	151920
27	VALVE, PRESSURE RELIEF	1	6	018433	018433	018433	018433
28	STATOR, HYDRAULIC	1	6	151617	151617	151617	151617
29	• INSERT, STATOR SS	6	6	018369	018369	018369	018369
30	CUTTER & DISC ASM 810/815	1		018918	154184	154184	154184
31	SHIM SET	1		012632	012632	012632	012632
32	CLAMP, STRAIN RELIEF (CORD, SOW)	1		001770	001770	001770	001770
	CLAMP, STRAIN RELIEF (CORD, H07RN-F3G1.5)	1		N/A	N/A	N/A	N/A
33	• SCREW, .25-20 X .75 HHM-SS	4	7	001916	001916	001916	001916
34	• SCREW, #6-32 X .25 RHM SL TC STLGR	3		001877	001877	001877	001877
35	• SCREW, .25-20 X 1 HHM-SS	4		007790	007790	007790	007790
36	• SCREW, .313-18 X 2 HH CAP FULL THREAD/SS	4	6	018186	018186	018186	018186
37	• WASHER, FLAT-SS .313	4	6	015914	015914	015914	015914
38	• NUT, .313-18 H-SS	4	6	001813	001813	001813	001813
39	• WASHER, RETAINING SS	1		008533	008533	008533	008533
40	• SCREW, .25-20 X .75 HH SS (NYLOCK)	1		009545	009545	009545	009545
41	• WASHER, FLAT-SS .25	6	5	004480	N/A	N/A	N/A
42	• SCREW, .25-20 X .875 (1.125 LENGTH FOR PLATE W/O RECESS)	6	6	018387	153205	153205	153205
43	DISC, CUTTER	1		010407	153203	153203	153203
44	CUTTER/SHIM ASM/3 BLADE	1		019695	154185	154185	154185
45	RELAY	0		N/A	N/A	N/A	N/A
46	INSULATION - INSULATOR	0		N/A	N/A	N/A	N/A
47	SWITCH, FLTS - TERM & SEAL	0		N/A	N/A	N/A	N/A
48	• SEAL, CORD - FLT SWITCH	0		N/A	N/A	N/A	N/A
49	• CONNECTOR WIRENUT	0		N/A	N/A	N/A	N/A
□	REBUILD KIT			151488	151488	151488	151488
□	WET END REBUILD KIT			N/A	156476	156476	156476
□	CAPACITOR REPLACEMENT KIT			156480	156480	156480	156480

**NOTES:**

- 1) Motor housing, stator & term. (Item 11) is preassembled at the factory and must be replaced as a unit. Stator is permanently attached to the Motor Housing. Plug (Item 9) and seal, thru wall term. (Item 10) are replaceable.
- 2) If an "X" follows Model No., or date Mfg. on brass ID tag, consult factory for ordering of this part.
- 3) See FM0160 Parts Price Sheet for listing of parts prices.
- 5) Flat washers required for plate without recess.
- 6) This item included in Wet End Rebuild Kit.
- 7) This item included in Capacitor Replacement Kit.

• Items included in Rebuild Kit.

□ Not Shown in Illustration.

# REPLACEMENT PARTS LIST FOR MODEL "RE7021" MANUAL RUN OPTION

See page 7 for illustration.

REF NO.	DESCRIPTION	QTY	NOTES	MODELS:		
				RE7021-A	RE7021-B	RE7021-C
				3/13 thru 1/16	2/16 thru 5/16	6/16 thru 09/24
1	• HANDLE	1		217069	217069	217069
2	COVER & CORD	1	2	152558	152558	152558
3	CORD, TERM & SEAL ASM	1	2	152533	152533	152533
4	• SEAL, CORD-ASM & STRAIN RELIEF	1	2	015634	015634	015634
5	COVER-MACH.	1		014150	014150	014150
6	• GASKET, CASE/COVER	1	7	012649	012649	012649
7	• WIRE PKG.	1	7	004751	004751	004751
8	CAPACITOR & CLAMP ASM	1	7	151706	151706	151706
9	• PLUG, TEST	2	6,7	015023	015023	015023
10	• SEAL, THRU WALL TERM	3	7	003402	003402	003402
11	HOUSING, MOTOR & STATOR	1	1	018909	018909	018909
12	• SPRING, BEARING PRELOAD	1		017192	017192	017192
13	• BEARING, UPPER 6201	1		006703	006703	006703
14	ROTOR & BEARING ASM	1		018911	018911	018911
15	• KEY	1		017893	017893	017893
16	• BEARING, LOWER	1		012544	012544	012544
17	• SEAL, MOTOR HOUSING	1		012648	012648	012648
18	• OIL, DIELECTRIC-(57 OZ CAN)	1	6	009051	009051	009051
19	ADAPTER-MACH.	1		017891	017891	017891
20	• SEAL, SHAFT	1	6	155723	155723	155723
21	• WASHER, SEAL LOCATING & SNAP RING	1	6	018913	018913	018913
22	ROTOR, PUMP-HYDRAULIC & PIN	1	6	018915	018915	018915
23	• PIN	1		018892	018892	018892
24	• SEAL, PUMP HOUSING	1	6	151078	151078	151078
25	HOUSING, PUMP-MACH. & PRESS. RLF VALVE	1		019551	019551	019551
26	LEG, WIREFORM	1		151920	151920	151920
27	VALVE, PRESSURE RELIEF	1	6	018433	018433	018433
28	STATOR, HYDRAULIC	1	6	151617	151617	151617
29	• INSERT, STATOR SS	6	6	018369	018369	018369
30	CUTTER & DISC ASM 810/815	1		018918	018918	154184
31	SHIM SET	1		012632	012632	012632
32	CLAMP, STRAIN RELIEF-RED	1		013765	013765	013765
33	• SCREW, .25-20 X .75 HHM-SS	4	7	001916	001916	001916
34	• SCREW, #6-32 X .25 RHM SL TC STLGR	5		001877	001877	001877
35	• SCREW, .25-20 X 1 HHM-SS	4		007790	007790	007790
36	• SCREW, .313-18 X 2 HH CAP FULL THREAD/SS	4	6	018186	018186	018186
37	• WASHER, FLAT-SS .313	4	6	015914	015914	015914
38	• NUT, .313-18 H-SS	4	6	001813	001813	001813
39	• WASHER, RETAINING SS	1		008533	008533	008533
40	• SCREW, .25-20 X .75 HH SS (NYLOCK)	1		009545	009545	009545
41	• WASHER, FLAT-SS .25	6	5	004480	004480	N/A
42	• SCREW, .25-20 X .875 (1.125 LENGTH FOR PLATE W/O RECESS)	6	6	018387	018387	153205
43	DISC, CUTTER	1		010407	010407	153203
44	CUTTER/SHIM ASM/3 BLADE	1		019695	019695	154185
45	RELAY	1	7	217093	153833	153833
46	INSULATION - INSULATOR	4	7	001797	001797	001797
47	SWITCH, FLTS - TERM & SEAL	1		N/A	N/A	N/A
48	• SEAL, CORD - FLT SWITCH	1		N/A	N/A	N/A
49	• CONNECTOR WIRENUT	2		N/A	N/A	N/A
□	REBUILD KIT			152751	152751	152751
□	WET END REBUILD KIT			N/A	N/A	156476
□	CAPACITOR REPLACEMENT KIT			N/A	156481	156481

- Items included in Rebuild Kit.
- Not Shown in Illustration.

## NOTES:

- 1) Motor housing, stator & term. (Item 11) is preassembled at the factory and must be replaced as a unit. Stator is permanently attached to the Motor housing. Plug (Item 9) and Seal, thru wall term. (Item 10) are replaceable.
- 2) If an "X" follows Model No., or date Mfg. on brass ID tag, consult factory for ordering of this part.
- 3) See FM0160 Parts Price Sheet for listing of parts prices.
- 4) "N/A" indicates, not applicable.
- 5) Flat washers required for plate without recess.
- 6) This item included in Wet End Rebuild Kit.
- 7) This item included in Capacitor Replacement Kit.

**REPLACEMENT PARTS LIST FOR MODEL “RWD7021 AND RWH7021”**

See page 7 for illustration.

REF NO.	DESCRIPTION	QTY	NOTES	MODELS:				
				RWD7021-A	RWD7021-B	RWD7021-C	RWD7021-D	RWH7021-A
				3/15 thru 1/16	2/16 thru 5/16	6/16 thru 09/24	10/24 thru Current	04/20 thru Current
1	• HANDLE	1		217069	217069	217069	217069	217069
2	COVER & CORD	1	2	153382	153382	153382	153382	153382
3	CORD, TERM & SEAL ASM	1	2	153386	153386	153386	153386	153386
4	• SEAL, CORD-ASM & STRAIN RELIEF	1	2	015634	015634	015634	015634	015634
5	COVER-MACH.	1		014152	014152	014152	014152	014152
6	• GASKET, CASE/COVER	1	7	012649	012649	012649	012649	012649
7	• WIRE PKG.	1	7	004751	004751	004751	004751	004751
8	CAPACITOR & CLAMP ASM	1	7	151706	151706	151706	151706	151706
9	• PLUG, TEST	2	6,7	015023	015023	015023	015023	015023
10	• SEAL, THRU WALL TERM	3	7	003402	003402	003402	003402	003402
11	HOUSING, MOTOR & STATOR	1	1	018909	018909	018909	150961	150961
12	• SPRING, BEARING PRELOAD	1		017192	017192	017192	017192	017192
13	• BEARING, UPPER 6201	1		006703	006703	006703	006703	006703
14	ROTOR & BEARING ASM	1		018911	018911	018911	158825	018911
15	• KEY	1		017893	017893	017893	017893	017893
16	• BEARING, LOWER	1		012544	012544	012544	007765	012544
17	• SEAL, MOTOR HOUSING	1		012648	012648	012648	012648	012648
18	• OIL, DIELECTRIC-(57 OZ CAN)	1	6	009051	009051	009051	009051	009051
19	ADAPTER-MACH.	1		017891	017891	017891	158826	017891
20	• SEAL, SHAFT	1	6	155723	155723	155723	151365	155723
21	• WASHER, SEAL LOCATING & SNAP RING	1	6	018913	018913	018913	007769	018913
22	ROTOR, PUMP-HYDRAULIC & PIN	1	6	018915	018915	018915	158827	018915
23	• PIN	1		018892	018892	018892	N/A	018892
24	• SEAL, PUMP HOUSING	1	6	151078	151078	151078	151078	151078
25	HOUSING, PUMP-MACH. & PRESS. RLF VALVE	1		019551	019551	019551	019551	019551
26	LEG, WIREFORM	1		151920	151920	151920	157359	151920
27	VALVE, PRESSURE RELIEF	1	6	018433	018433	018433	018433	018433
28	STATOR, HYDRAULIC	1	6	151617	151617	151617	151617	151617
29	• INSERT, STATOR SS	6	6	018369	018369	018369	018369	018369
30	CUTTER & DISC ASM 810/815	1		018918	018918	154184	154184	154184
31	SHIM SET	1		012632	012632	012632	012632	012632
32	CLAMP, STRAIN RELIEF-RED	1		013765	013765	013765	013765	013765
33	• SCREW, .25-20 X .75 HHM-SS	4	7	001916	001916	001916	001916	001916
34	• SCREW, #6-32 X .25 RHM SL TC STLGR	5		001877	001877	001877	001877	001877
35	• SCREW, .25-20 X 1 HHM-SS	4		007790	007790	007790	007790	007790
36	• SCREW, .313-18 X 2 HH CAP FULL THREAD/SS	4	6	018186	018186	018186	018186	018186
37	• WASHER, FLAT-SS .313	4	6	015914	015914	015914	015914	015914
38	• NUT, .313-18 H-SS	4	6	001813	001813	001813	001813	001813
39	• WASHER, RETAINING SS	1		008533	008533	008533	008533	008533
40	• SCREW, .25-20 X .75 HH SS (NYLOCK)	1		009545	009545	009545	009545	009545
41	• WASHER, FLAT-SS .25	6	5	004480	004480	N/A	N/A	N/A
42	• SCREW, .25-20 X .875 (1.125 LENGTH FOR PLATE W/O RECESS)	6	6	018387	018387	153205	153205	153205
43	DISC, CUTTER	1		010407	010407	153203	153203	153203
44	CUTTER/SHIM ASM/3 BLADE	1		019695	019695	154185	154185	154185
45	RELAY	1	7	217093	153833	153833	153833	153833
46	INSULATION - INSULATOR	4	7	001797	001797	001797	001797	001797
47	SWITCH, FLTS - TERM & SEAL	1	7	153383	153383	153383	153383	153383
48	• SEAL, CORD - FLT SWITCH	1	7	094043	094043	094043	094043	094043
49	• CONNECTOR WIRENUT	2	7	003753	003753	003753	003753	003753
□	REBUILD KIT			152751	152751	152751	152751	152751
□	WET END REBUILD KIT			N/A	N/A	156476	156476	156476
□	CAPACITOR REPLACEMENT KIT			N/A	156482	156482	156482	156482

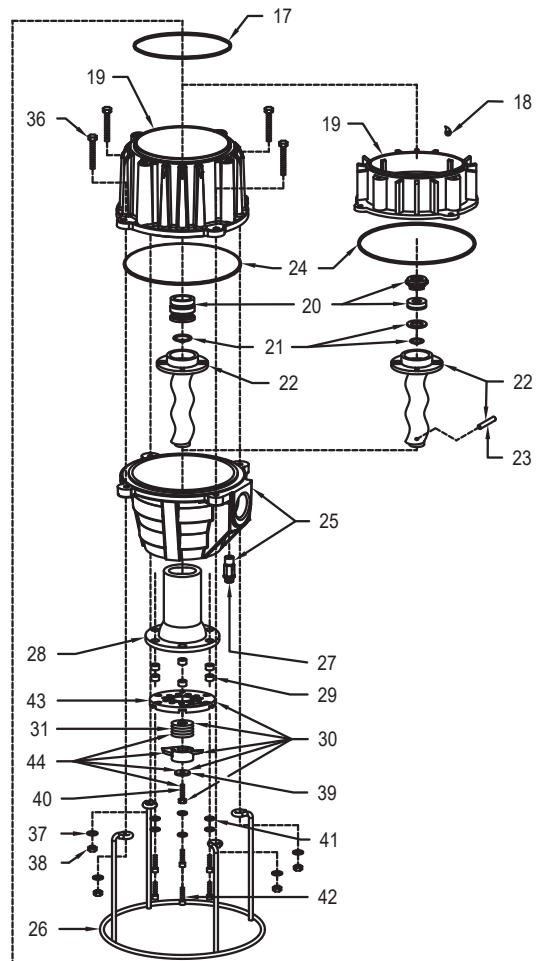
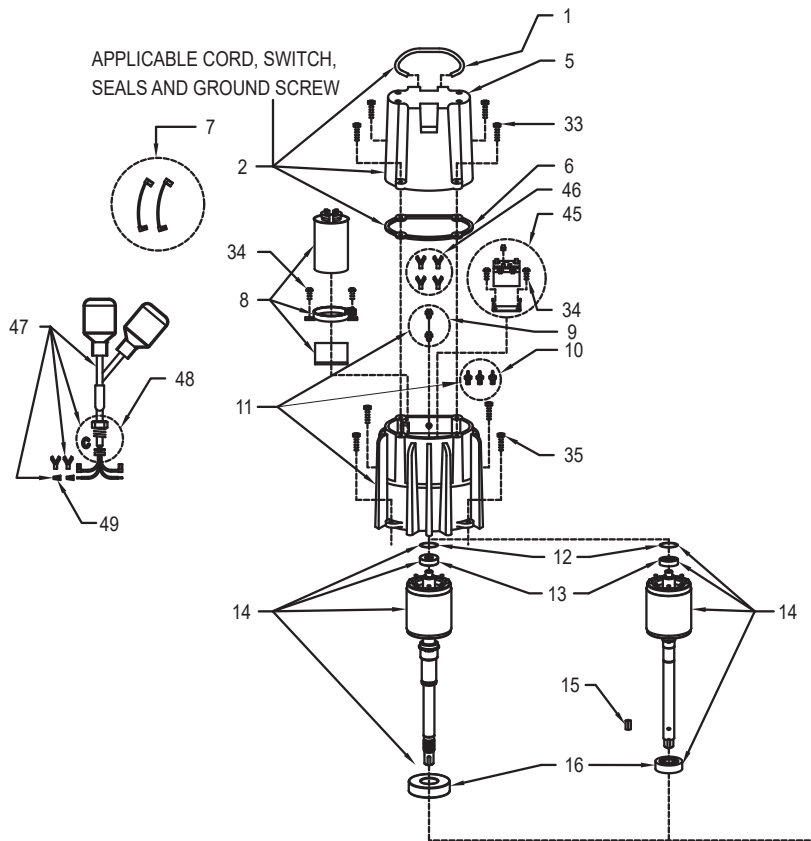
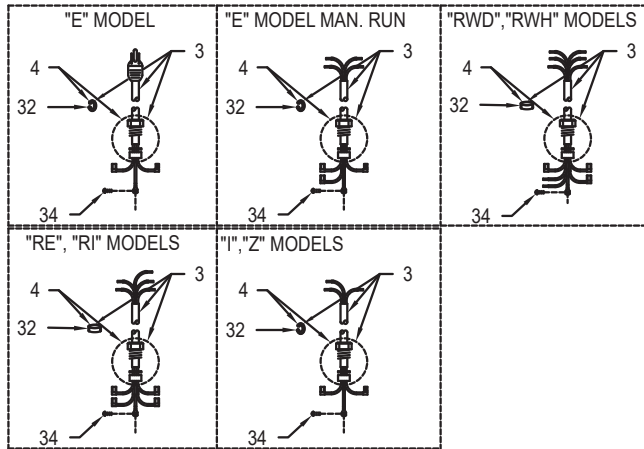
• Items included in Rebuild Kit.

□ Not Shown in Illustration.

**NOTES:**

- 1) Motor housing, stator & term. (Item 11) is preassembled at the factory and must be replaced as a unit. Stator is permanently attached to the Motor housing. Plug (Item 9) and seal, thru wall term. (Item 10) are replaceable.
- 2) If an “X” follows Model No., or date Mfg. on brass ID tag, consult factory for ordering of this part.
- 3) See FM0160 Parts Price Sheet for listing of parts prices.
- 4) “N/A” indicates, not applicable.
- 5) Flat washers required for plate without recess.
- 6) This item included in Wet End Rebuild Kit.
- 7) This item included in Capacitor Replacement Kit.

# REPLACEMENT PARTS ILLUSTRATION FOR 7021 - ALL MODELS



SK2653

## Progressing Cavity Service Kits Electrical Kits

E/I7021	PN - 156480
4	Screw
3	Thru Wall Terminals
1	Capacitor Assembly
1	Wire Package
1	Viton Gasket
1	Brass Test Plug

RWD/RWH7021	PN - 156482
3	Flag Terminals
4	Screws
3	Thru Wall Terminals
1	Capacitor Assembly
1	Wire Package
1	Viton Gasket
1	Brass Test Plug
1	Relay
1	Float Switch Assembly

## Cap & Cord Assembly Kits

E7021 - PN 151485 or I7021 - PN 153104	
1	Cord Assembly
1	Cover with Handle
1	Viton Gasket

RWD/RWH7021	PN - 153382
1	Cord Assembly
1	Cover with Handle
1	Viton Gasket

## Power Cord Replacement Kit

E/I7021	PN - 157339
1	Power Cord
1	Strain Relief
1	Viton Gasket

RWD/RWH7021	PN - 153386
1	Power Cord
1	Strain Relief
1	Viton Gasket

## Cutter Assembly

7021 Models	PN - 154184
1	Shim Set
1	Cutter & Cutter Plate
1	Washer and Screw

## Float Switch Kit

RWD/RWH7021	PN - 157338
1	Cord Seal
2	Wire Nut
1	Float
1	Viton Gasket

## Wet End

7021 Models	PN - 158830
1	Hydraulic Stator
6	Stator Inserts
4	Nut
6	Screw
4	Screw
1	Brass Test Plug
1	Viton O Ring
1	SC/C Shaft Seal
1	Pressure Relief Valve
1	Hydraulic Rotor
1	Snap Ring
4	Washer

**NOTES**

A large, empty rectangular box with a thin black border, occupying most of the page. It is intended for the user to write their notes.

## NOTES



MAIL TO: P.O. BOX 16347 • Louisville, KY 40256-0347 USA  
SHIP TO: 3649 Cane Run Road • Louisville, KY 40211-1961 USA  
+1 (502) 778-2731 • 1(800) 928-PUMP

Trusted. Tested. Tough.®

visit our web site:  
[zoellerengineered.com](http://zoellerengineered.com)